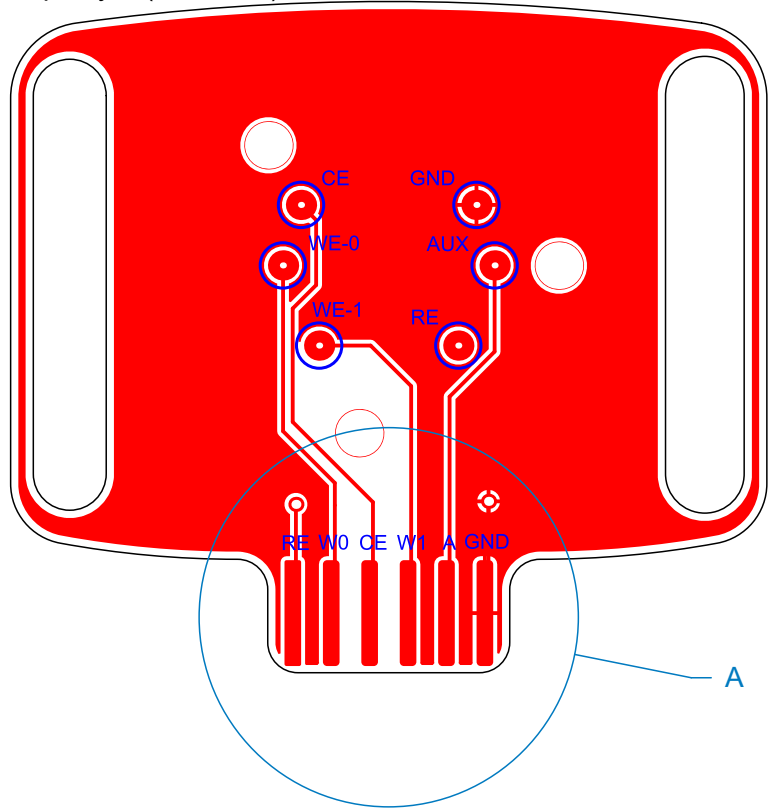


Layer Stack Legend

Material	Layer	Thickness	Dielectric Material	Type	Gerber
	Top Overlay			Legend	GTO
Surface Material	Top Solder	0.04mm	Solder Resist	Solder Mask	GTS
Copper	Top Layer	0.04mm		Signal	GTL
		1.40mm	FR-4	Dielectric	
Copper	Bottom Layer	0.04mm		Signal	GBL
Surface Material	Bottom Solder	0.04mm	Solder Resist	Solder Mask	GBS
	Bottom Overlay			Legend	GBO
Total thickness: 1.54mm					

Top Layer (Scale 2:1)



DETAIL A (Scale 4:1)

