

# EmStat4M™

ELECTROCHEMICAL INTERFACE MODULE  
POTENTIOSTAT | GALVANOSTAT | IMPEDANCE ANALYZER (optional)



## Contents

Potentiostat module with desktop performance.....	3
Supported Techniques .....	4
Measurement Specifications .....	5
Module Specifications .....	6
EmStat4M LR EIS Accuracy Contour Plot .....	8
EmStat4M HR EIS Accuracy Contour Plot.....	8
EmStat4M Starter and Development Kit .....	10
PSTrace: Software for Windows .....	11
EmStat4M works with MethodSCRIPT™.....	13
Integrate Electrochemistry into Your Own Applications .....	14

➤ See for more information:  
[www.palmsens.com/emstat4m](http://www.palmsens.com/emstat4m)

## Potentiostat module with desktop performance

The EmStat4M is a module (small PCB) of 62 x 40 mm functioning as Potentiostat, Galvanostat, and optional Frequency Response Analyser (FRA) for Electrochemical Impedance Spectroscopy (EIS).

It can be powered and communicate directly via its USB-C port, or it can be mounted on a carrier PCB using pin headers for communication, power and cell connections.

A high-end LEMO plug for using standard shielded sensor cables is standard available on the module.

## Two versions for different applications

The EmStat4M Low Range version is ideal for applications that require a low current range down to 1 nA, whereas the High Range version is designed for applications that require a maximum current of up to 200 mA or higher potentials.

The following table shows the main differences:



EmStat4M LR



EmStat4M HR

• potential range	±3 V	±6 V
• max. compliance	±5 V	±8 V
• current ranges	1 nA to 10 mA (8 ranges)	100 nA to 100 mA (7 ranges)
• max. current	±30 mA	±200 mA
• FRA/EIS (optional)	10 $\mu$ Hz to 200 kHz	
• electrodes	WE, RE, CE, and ground	WE, RE, CE, S, and ground



## On-board mass storage

The EmStat4M is equipped with 500 MB internal storage memory for storing measurement data. Internally stored measurements can be browsed and transferred back to the PC easily using PSTrace for Windows. Or you can write your own code to manage the internally stored measurements.

## Communications protocol and Software Development Tools

The EmStat4M module works with the human-readable MethodSCRIPT protocol for direct serial (USB or UART) communication. This allows for connecting and using the module in a terminal window or with any microcontroller, PC, or operating system.

See page 13 for more information.



MethodSCRIPT™

## Supported Techniques

The EmStat4M supports the following electrochemical techniques:

### Voltammetric techniques

- |                            |     |
|----------------------------|-----|
| ▪ Linear Sweep Voltammetry | LSV |
| ▪ Cyclic Voltammetry       | CV  |
| ▪ Fast Cyclic Voltammetry  | FCV |
| ▪ AC Voltammetry           | ACV |

### Pulsed techniques

- |                                  |     |
|----------------------------------|-----|
| ▪ Differential Pulse Voltammetry | DPV |
| ▪ Square Wave Voltammetry        | SWV |
| ▪ Normal Pulse Voltammetry       | NPV |

These methods can all be used in their stripping modes which are applied for (ultra-) trace analysis.

### Amperometric techniques

- |                                 |     |
|---------------------------------|-----|
| ▪ Chronoamperometry             | CA  |
| ▪ Zero Resistance Amperometry   | ZRA |
| ▪ Chronocoulometry              | CC  |
| ▪ MultiStep Amperometry         | MA  |
| ▪ Fast Amperometry              | FAM |
| ▪ Pulsed Amperometric Detection | PAD |

### Galvanostatic techniques

- |                              |     |
|------------------------------|-----|
| ▪ Linear Sweep Potentiometry | LSP |
| ▪ Chronopotentiometry        | CP  |
| ▪ MultiStep Potentiometry    | MP  |
| ▪ Open Circuit Potentiometry | OCP |

### Other

- |  |            |
|--|------------|
| ▪ Mixed Mode   | MM         |
| ▪ Potentiostatic and Galvanostatic Impedance spectroscopy at fixed frequency or frequency scan vs <ul style="list-style-type: none"> <li>○ fixed potential or fixed current</li> <li>○ scanning potential or scanning current</li> <li>○ time</li> </ul> | EIS/GEIS   |
| ▪ Fast EIS/GEIS <ul style="list-style-type: none"> <li>○ Very low interval fixed-frequency measurements</li> </ul>   | FEIS/FGEIS |

MethodSCRIPT™ allows for developing custom techniques. See page 13 for more information.



## Measurement Specifications

Limits for some technique-specific parameters.

	Parameter	Min	Max
All techniques (unless otherwise specified)	▪ Conditioning time	0	4000 s
	▪ Deposition time	0	4000 s
	▪ Equilibration time	0	4000 s
	▪ Step potential	LR: 0.100 mV HR: 0.183 mV	250 mV
	▪ N data points	3	1 000 000
▪ NPV ▪ DPV	▪ Scan rate	LR: 0.1 mV/s (100 $\mu$ V step) HR: 0.1 mV/s (183 $\mu$ V step)	1 V/s (5 mV step)
	▪ Pulse time	0.4 ms	300 ms
▪ SWV	▪ Frequency	1 Hz	1250 Hz
▪ LSV ▪ CV	▪ Scan rate	LR: 0.01 mV/s (100 $\mu$ V step) HR: 0.01 mV/s (183 $\mu$ V step)	500 V/s (200 mV step)
▪ FCV	▪ Scan rate	LR: 0.1 mV/s (100 $\mu$ V step) HR: 0.01 mV/s (183 $\mu$ V step)	500 V/s (50 mV step)
	▪ N averaged scans	1	65535
	▪ N equil. scans	0	65535
▪ PAD	▪ Interval time	50 ms	4294 s
	▪ Pulse time	1 ms	1 s
	▪ N data points	3	1 000 000 (> 100 days at 10 s interval)
▪ CA ▪ CP ▪ OCP	▪ Interval time	0.4 ms	4294 s
	▪ Run time	1 ms	> year
▪ MM ▪ MA ▪ MP	▪ N cycles	1	20000
	▪ N levels	1	255
	▪ Level switching overhead time	~1 ms (typical)	-
	▪ Interval time	0.4 ms	4294 s
▪ FAM	▪ Interval time	1 $\mu$ s	60 s
	▪ Run time	3 $\mu$ s	34 days (60 s interval) 50 ms (1 $\mu$ s interval)
	▪ N data points	3	50000
▪ Fast EIS	Interval time between points at fixed frequency	~1 ms (typical)	-

## Module Specifications

General		
	LR	HR
▪ dc-potential range	±3 V	±6 V
▪ compliance voltage	±5 V	±8 V
▪ maximum current	±30 mA	±200 mA
▪ max. data acquisition rate	1M samples/s	
▪ control loop bandwidth (stability setting)	320 Hz, 3.2 kHz, 30 kHz or 570 kHz	
▪ current follower bandwidth	23 Hz in 1 nA and 10 nA range 2.3 kHz in 100 nA and 1 uA range 230 kHz in 10 uA and 100 uA range > 500 kHz in ranges 1 mA and higher	

Potentiostat (controlled potential mode)		
	LR	HR
▪ applied potential resolution	100 µV	183 µV
▪ applied potential accuracy	≤ 0.2% ±1 mV offset	
▪ current ranges	1 nA to 10 mA (8 ranges)	100 nA to 100 mA (7 ranges)
▪ measured current resolution	0.009% of CR (92 fA on 1 nA range)	
▪ measured current accuracy	< 0.2% of current ±20 pA ±0.2% of range	< 0.2% of current ±0.2% of range

Galvanostat (controlled current mode)		
	LR	HR
▪ current ranges	10 nA, 1 uA, 100 uA, 10 mA (4 ranges)	1 uA, 100 uA, 10 mA, 100 mA (4 ranges)
▪ applied dc-current	±3 * CR (current range)	
▪ applied dc-current resolution	0.01% of CR	0.0183% of CR
▪ applied dc-current accuracy	< 0.4% of current ±20 pA ±0.2% of range	< 0.4% of current ±0.2% of range
▪ potential ranges	50 mV, 100 mV, 200 mV, 500 mV, 1 V	
▪ measured dc-potential resolution	96 µV at ±3 V (1 V range) 48 µV at ±1.5 V (500 mV) 19.2 µV at ±0.6 V (200 mV) 9.6 µV at ±0.3 V (100 mV) 4.8 µV at ±0.150 V (50 mV)	193 µV at ±6 V (1 V range) 96.5 µV at ±3 V (500 mV) 38.5 µV at ±1.2 V (200 mV) 19.3 µV at ±0.6 V (100 mV) 9.65 µV at ±0.3 V (50 mV)
▪ measured dc-potential accuracy	≤ 0.2% potential, ±1 mV offset	

## FRA / EIS (impedance measurements)

▪ frequency range	10 $\mu$ Hz to 200 kHz
▪ ac-amplitude range	1 mV to 900 mV rms, or 2.5 V p-p

## GEIS (galvanostatic impedance measurements)

▪ frequency range	10 $\mu$ Hz to 100 kHz
▪ ac-amplitude range	0.9 * CR A rms

## Electrometer

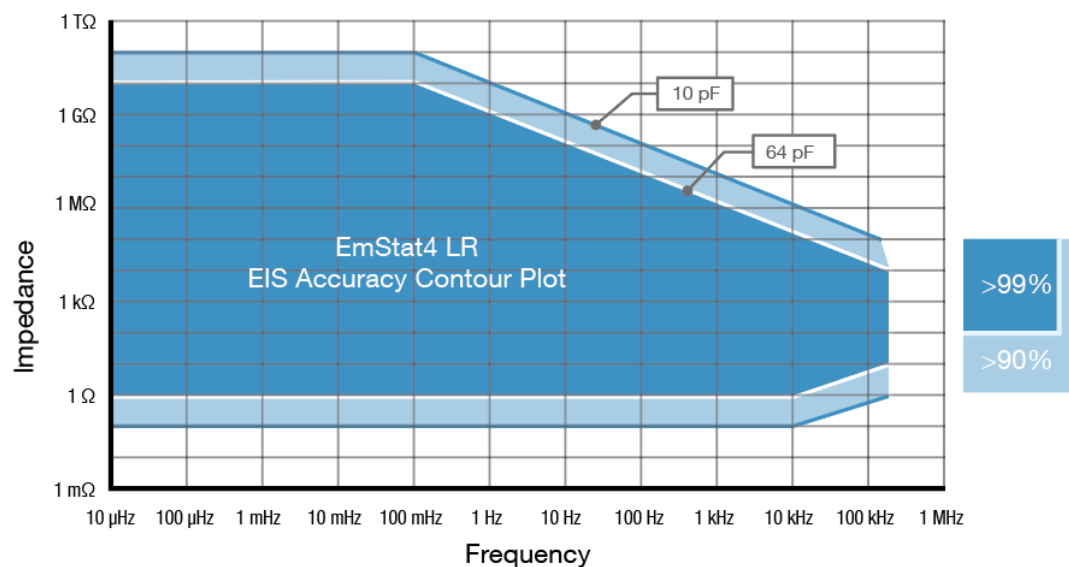
▪ electrometer amplifier input	> 1 T $\Omega$ // 10 pF
▪ bandwidth	500 kHz

## Other

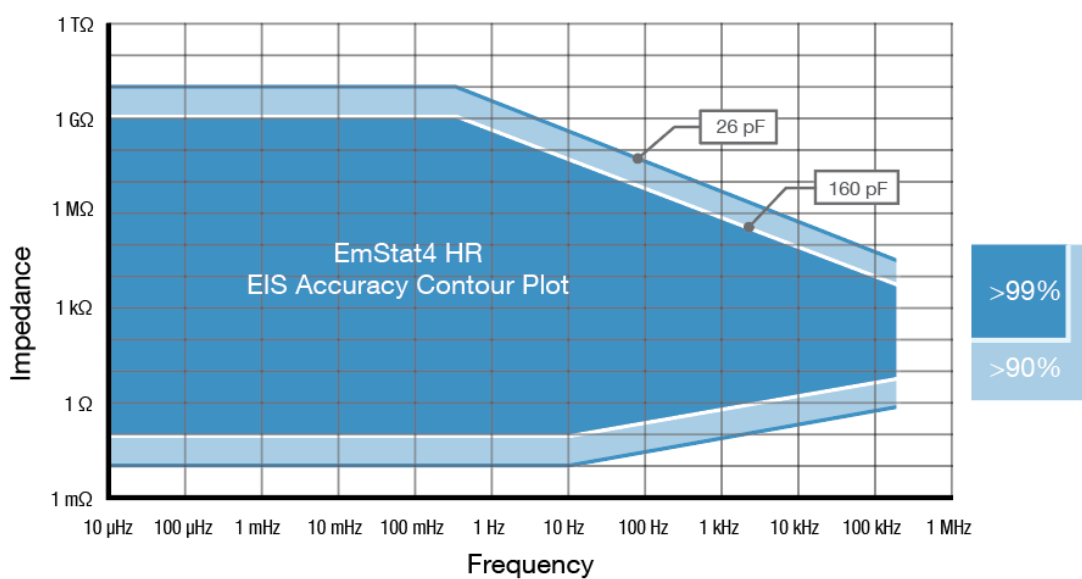
	LR	HR
▪ electrode connections	WE, RE, CE, and ground	WE, RE, CE, S and ground
▪ weight	~30 g	
▪ operating temperature	-40 °C to +85 °C. <sup>1</sup>	
▪ power + communication	USB-C	
▪ internal storage space	500 MB, equivalent to >15M datapoints or ~1000 measurement files (whichever comes first)	

<sup>1</sup> All the components of the EmStat4M are rated to the industrial standard of -40 °C to +85 °C. The EmStat4M is calibrated at 21 °C. The most sensitive components of the EmStat4M have a temperature drift of 50 ppm. At 1 °C or 41 °C, measurement drift of up to 0.1% may be experienced.

## EmStat4M LR EIS Accuracy Contour Plot



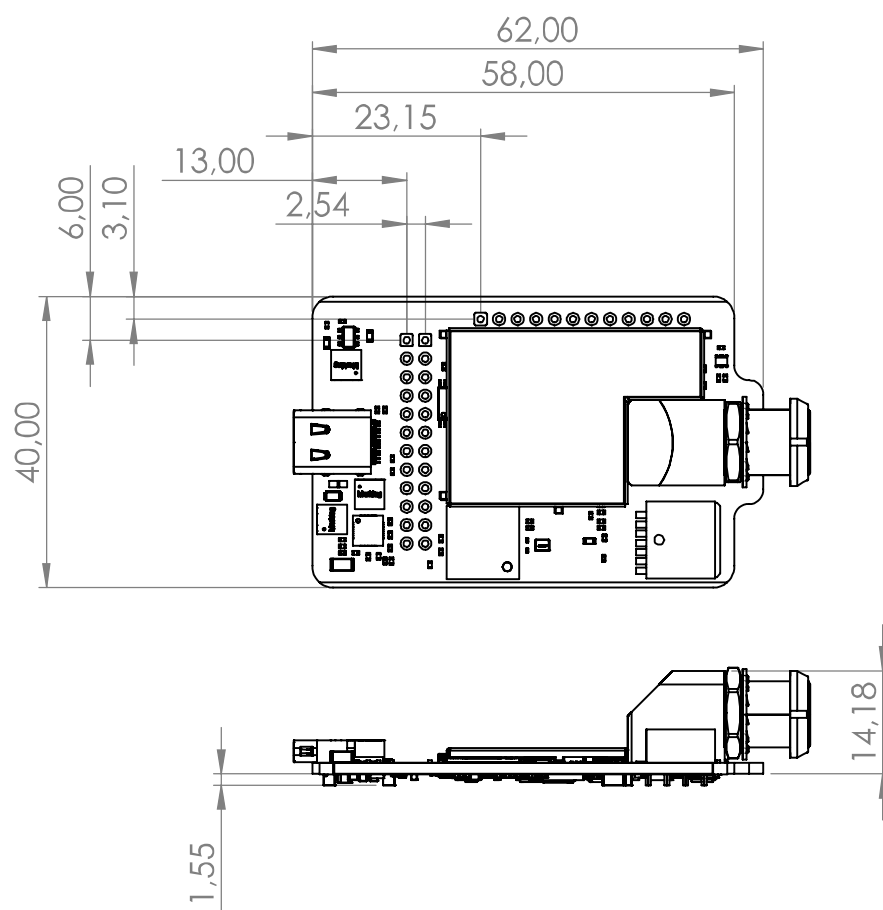
## EmStat4M HR EIS Accuracy Contour Plot



## Note

The accuracy contour plots were determined with an ac-amplitude of  $\leq 10$  mV rms for all limits, except for the high impedance limit, which was determined using an ac-amplitude of 250 mV. The standard cables were used. Please note that the true limits of an impedance measurement are influenced by all components in the system, e.g. connections, the environment, and the cell.





See document “EmStat4M Data Sheet” for pin-out and more technical details.

## EmStat4M Starter and Development Kit

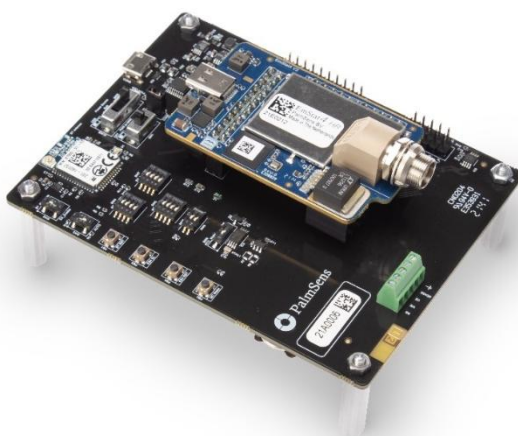
The EmStat4M module can be ordered as a bare module or as part of a kit.

We offer two kits; the Starter Kit and the Development Kit with the additional Development Board (PCB) which offers extra peripherals including:

- Bluetooth module,
- Support for a LiPo battery, incl. charging,
- Pin headers for an MKR-series Arduino,
- Break-out EmStat4M GPIO pins,
- Screw-terminals for easy wire connections,
- RTC for real-time clock,
- and push buttons for triggering / testing.

	Module only	Starter Kit	Development Kit
▪ EmStat4M LR or HR module	✓ *	✓	✓
▪ Development Board	-	-	✓
▪ USB-C cable	-	✓	✓
▪ USB-C splitter cable for extra power (EmStat4M HR only)	-	✓	✓
▪ Sensor cable (1 meter with 2 mm pins)	-	✓	✓
▪ 4 or 5 croc clips	-	✓	✓
▪ Dummy Cell	-	✓	✓
▪ USB drive with PSTrace software for Windows and documentation	-	✓	✓
▪ Quick Start document	-	✓	✓
<a href="#">More information</a>			

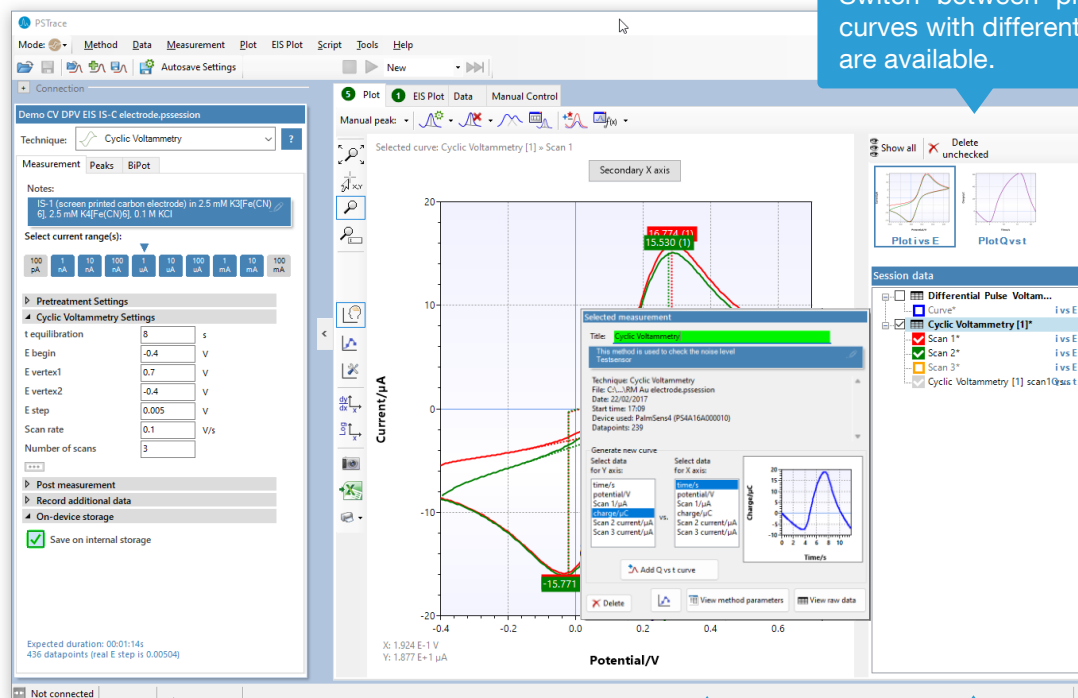
\* With optional LEMO sensor connector



EmStat4M Development Board

## PSTrace: Software for Windows

PSTrace is designed to get the most out of your instrument right after installation, without going through a long learning period. It has three modes; the Scientific mode which allows you to run all the techniques our instruments have to offer, and two dedicated modes for Corrosion analysis and the Analytical Mode. The Analytical Mode is designed for use with (bio)sensors and allows you to do concentration determinations. Extensive help files and prompts guide the user through a typical analysis.



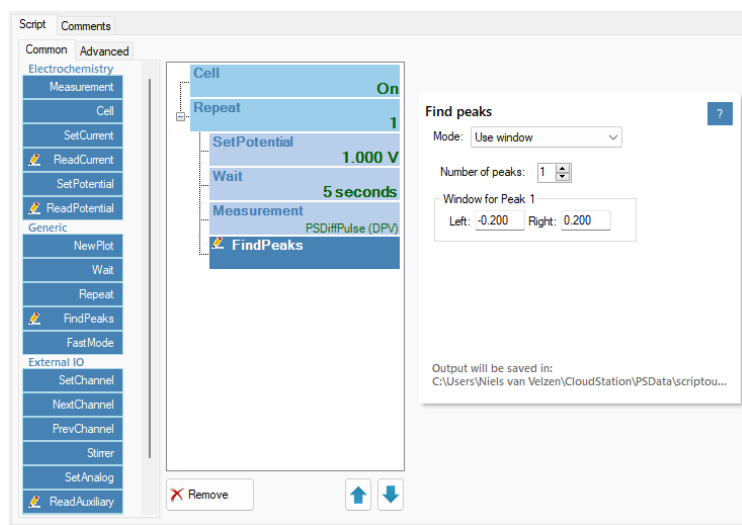
Setup your measurement easily and get immediate feedback on validity of parameters.

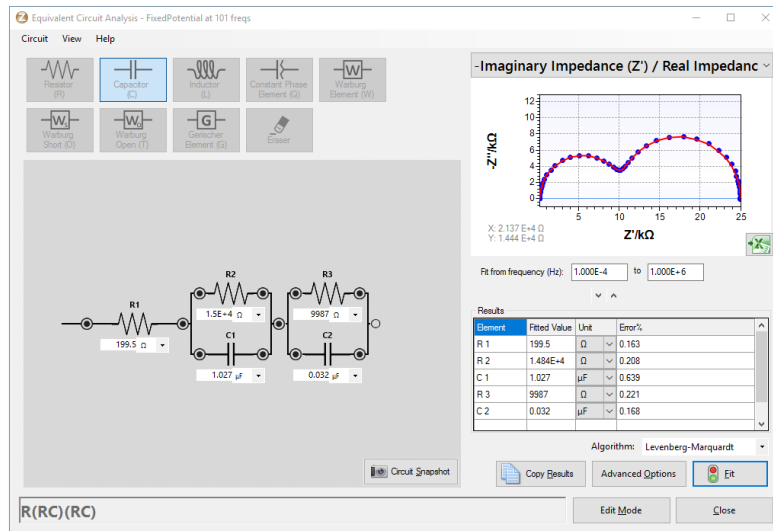
Click on a measurement for detailed information or generating new curves.

Quickly toggle the visibility of curves or groups of curves.

## Scripting

The intuitive script editor allows for easily creating a sequence of measurements or other tasks, by means of dragging and dropping actions in a list.



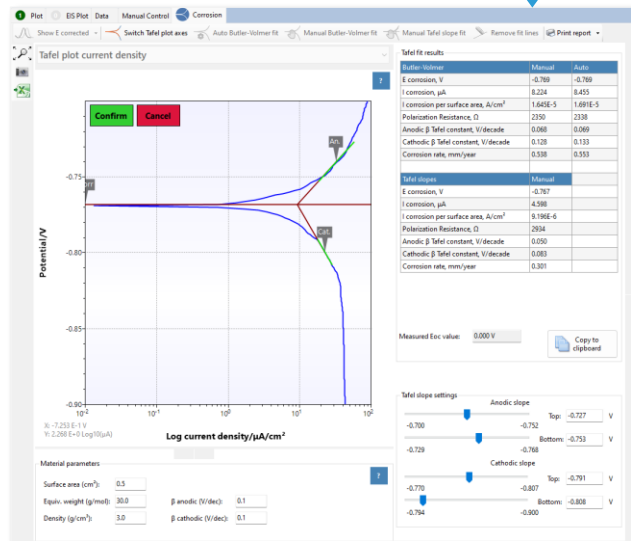


Use the graphical editor to draw the equivalent circuit or enter the CDC directly.

Corrosion mode for Tafel plot analysis and other corrosion data analysis.

## Other functions in PSTrace

- Concentration determination
- Advanced peak search algorithms
- Open your data in Origin and Excel with one click of a button
- Save all available curves, measurement data and methods to a single file
- Load measurements from the internal storage
- Direct validation of method parameters
- Run custom MethodSCRIPTs™



## Integration with third party software

- Excel
- Origin
- Matlab
- ZView



## Minimum System Requirements

- Windows 7, 8, 10 or 11
- 1 GHz or faster 32-bit (x86) or 64-bit (x64) processor
- 2 GB RAM (32-bit) or 4 GB RAM (64-bit)
- Screen resolution of 1280 x 800 pixels

➤ See for more information:  
[www.palmsens.com/pstrace](http://www.palmsens.com/pstrace)

## EmStat4M works with MethodSCRIPT™

The MethodSCRIPT™ scripting language is designed to integrate our instruments and potentiostat (modules) effortlessly in your hardware setup, product, or experiment.

MethodSCRIPT™ gives you full control over your potentiostat. The simple script language is parsed on board the instrument and allows for running all supported electrochemical techniques, making it easy to combine different measurements and other tasks.

MethodSCRIPT™ can be generated, edited, and executed in PSTrace.

MethodSCRIPT features include:

- Use of variables
- (Nested) loops and conditional logic support
- User code during a measurement iteration
- Exact timing control
- Simple math operations on variables (add, sub, mul, div)
- Digital I/O, for example for waiting for an external trigger
- Logging results to internal storage or external SD card
- Reading auxiliary values like pH or temperature
- and many more...

```
1 c
2 var c
3 var p
4 #Select bandwidth of 40 for 10 points per second
5 set_max_bandwidth 40
6 #Set current range to 1 mA
7 set_range ba 1m
8 #Enable autoranging, between current of 100 uA and 1 mA
9 set_auroranging ba 100u 1m
10 #Turn cell on for measurements
11 cell_on
12 #equilibrate at -0.5 V for 5 seconds, using a CA measurement
13 meas_loop_ca p c -500m 500m 5
14   pck_start
15   pck_add p
16   pck_add c
17   pck_end
18 endloop
19 #Start LSV measurement from -0.5 V to 1.5 V, with steps of 10 mV
20 #and a scan rate of 100 mV/s
21 meas_loop_lsv p c -500m 1500m 10m 100m
22 #Send package containing set potential and measured WE current.
23   pck_start
24   pck_add p
25   pck_add c
26   pck_end
27   #Abort if current exceeds 1200 uA
28   if c > 1200u
29     abort
30 endloop
31 #Turn off cell when done or aborted
32 on_finished:
33   cell_off
34
```

[Online support on MethodSCRIPT](#)



**Write your own software and integrate (generated) MethodSCRIPTs. No libraries needed.**

MethodSCRIPT is parsed on board the instrument. No DLLs or other type of code libraries are required for using MethodSCRIPT™



**MethodSCRIPT™**

Code examples are available for:



C/C++



➤ See for more information:  
[www.palmsens.com/methodscript](http://www.palmsens.com/methodscript)

## Integrate Electrochemistry into Your Own Applications

### Seamless Instrument Control

- Access all PalmSens potentiostats (single- and multi-channel) through our SDKs.
- Full control of measurement techniques, data acquisition, and real-time analysis.

### Cross-Platform Support

- **Python SDK**  
Script and automate experiments across platforms.
- **Windows .NET SDK**  
Easily integrate in C#, VB.NET, or any .NET language.
- **Android & iOS SDKs**  
Build mobile apps to run PalmSens instruments in the field.
- **LabVIEW & MATLAB examples**  
Quick start for engineers and researchers.



### Accelerate Development

- Pre-built code sample
- Clear documentation & active support
- Sample apps to get started within minutes



PalmSens SDKs  
put you in control  
from the lab to the field



➤ See for more information:  
[www.palmsens.com/dev](http://www.palmsens.com/dev)

PalmSens BV has more than 50 distributors around the world.  
Please contact us at [info@palmsens.com](mailto:info@palmsens.com) or go to our website to  
get in touch with a distributor in your region.



Please do not hesitate to contact PalmSens for more details: [info@palmsens.com](mailto:info@palmsens.com)

**PalmSens BV**  
**The Netherlands**  
[www.palmsens.com](http://www.palmsens.com)

**DISCLAIMER**

Changes in specifications and typing errors reserved.  
Every effort has been made to ensure the accuracy of  
this document. However, no rights can be claimed by  
the contents of this document.

