

# LABLINK HUB

seamless instrument sharing,  
robust data buffering and storage

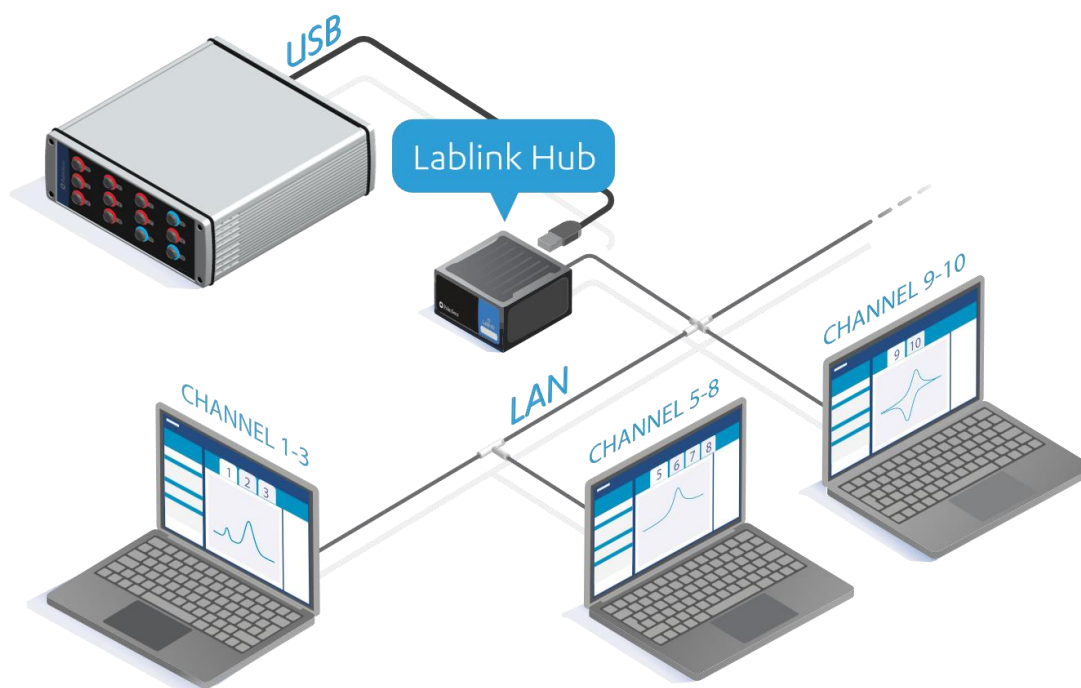


## Lablink: Networked Electrochemical Research

The Lablink Hub is a dedicated instrument server to streamline electrochemical research. It acts as the bridge between your hardware and the network, allowing standard PalmSens instruments to interface with the Lablink platform.

The Lablink Hub enables multiple users to access and share instruments with ease. It takes control of measurements for maximum reliability, even during long experiments, while securely storing all data. Lablink brings flexibility, speed, and control to your electrochemical research, helping teams work smarter and achieve more.

The Lablink Hub makes it possible, for example, to split a MultiEmStat4 with 12 channels so that three different users can work simultaneously:



# Lablink



Share instruments with multiple users simultaneously



Centralized & local data storage



Uninterrupted measurements



## Sharing channels

User management and settings for the Lablink Hub can be conveniently configured through your web browser by visiting [lablink.local](http://lablink.local).

When a user connects to an instrument or channel via Lablink in PSTrace, other users will immediately see that it is unavailable. The channel becomes available again once the original connection is closed and no measurement is running. Alternatively, users can reserve channels through their browser via [lablink.local](http://lablink.local) using the 'Claim' buttons. Claiming a channel informs other Lablink users that it is reserved. The channel remains unavailable to others even after disconnecting, as long as no measurement is running.

The **Claim** buttons allow for making a long-term reservation on one or more instruments or channels.

Connected Instruments						
MultiEmStat4 HR Serial: MES4HR2202000516 Channels: 12 Idle: 12 Claimed: 7						
Name	Serial	Channel	Status	Claim	Claimed By	
EmStat4	ES4HR21E0162	1	Idle	Claimed	Alex	
EmStat4	ES4HR21E0163	2	Idle	Claimed	Alex	
EmStat4	ES4HR21E0172	3	Idle	Claimed	Alex	
EmStat4	ES4HR21E0179	4	Idle	Claimed	Alex	
EmStat4	ES4HR21E0184	5	Idle	Claimed	Sam	
EmStat4	ES4HR21E0196	6	Idle	Claimed	Sam	
EmStat4	ES4HR21E0200	7	Idle	Claimed	Sam	
EmStat4	ES4HR21E0213	8	Idle	Unclaimed		
EmStat4	ES4HR21E0217	9	Idle	Unclaimed		
EmStat4	ES4HR21E0224	10	Idle	Unclaimed		
EmStat4	ES4HR21E0228	11	Idle	Unclaimed		
EmStat4	ES4HR21E0240	12	Idle	Unclaimed		

Total: 12

Figure 1 - An overview of claimed and available instrument-channels on [lablink.local](http://lablink.local)



## Storage

All measurements performed via the Lablink Hub are automatically stored on its internal SSD. This ensures that anyone within the LAN can access the data and load it directly into our PStTrace software for Windows.

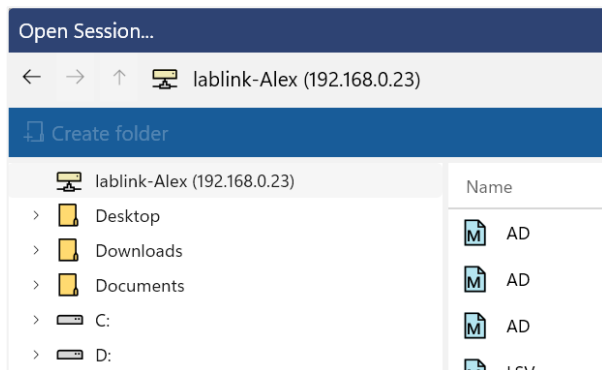


Figure 2 - Loading data from the Lablink is as easy as loading from a local folder



## Uninterrupted measurements

The Lablink Hub ensures that your measurements continue running even if PStTrace for Windows is closed. When you reconnect to the instrument or channel, you'll see all data from the start, with live updates continuing in the plot. Your experiment remains uninterrupted, giving you peace of mind during long or unattended measurements.

## Compatibility

The Lablink Hub works exclusively with **PStTrace Xpress for Windows** and can be used with the following instruments from PalmSens BV:

- MultiPalmSens4
- MultiEmStat4 LR and HR
- PalmSens4
- EmStat4S LR and HR
- MultiEmStat3 and 3+
- EmStat3 and 3+
- Sensit-series

More supported instruments, including the Nexus will follow soon.



[Download PStTrace Xpress](#)

## Specifications

Main Specifications	
Max channels / instruments	Up to 24 (for example 2x MultiEmStat4 12-channel or 24 single channel instruments)
USB Ports	4 (expandable by means of a USB hub*)
Operating System	Linux
Power	AC adapter 100-240 V, 50-60 Hz, 1.6 A (included)
WLAN	Wi-Fi 6 802.11ax
LAN	10/100/1000 Mbps
Ethernet Connector	RJ-45
Storage	512 GB (internal SSD)
Operating Temp	0 °C ~ 40 °C
Storage Temp	-40 °C – 85° C
Operating Humidity	5% ~ 90%
Storage Humidity	5% ~ 90%
Mounting	VESA-compatible bracket (standard 100x100 mm)
Dimensions	117.5 x 110.0 x 47.85 mm (4.63" x 4.33" x 1.88")
Weight	~1.0 kg
Certifications	CE (Europe), FCC (USA)
Product code (SKU)	C-LABHUB-S512C-R8C

\* USB hub needs to be purchased separately



➤ See for more information:  
[www.palmsens.com/lablink](http://www.palmsens.com/lablink)

PalmSens BV has more than 50 distributors around the world.  
Please contact us at [info@palmstens.com](mailto:info@palmstens.com) or go to our website to  
get in touch with a distributor in your region.



Please do not hesitate to contact PalmSens for more details: [info@palmstens.com](mailto:info@palmstens.com)

**PalmSens BV**  
**The Netherlands**  
[www.palmstens.com](http://www.palmstens.com)

**DISCLAIMER**

Changes in specifications and typing errors reserved.  
Every effort has been made to ensure the accuracy of  
this document. However, no rights can be claimed by  
the contents of this document.

